

Seeing Main Idea and Details in Art



ESOL and Visual Arts

Grades
6 – 8,
Level 1

WIDA ELD and Common Core Standards:

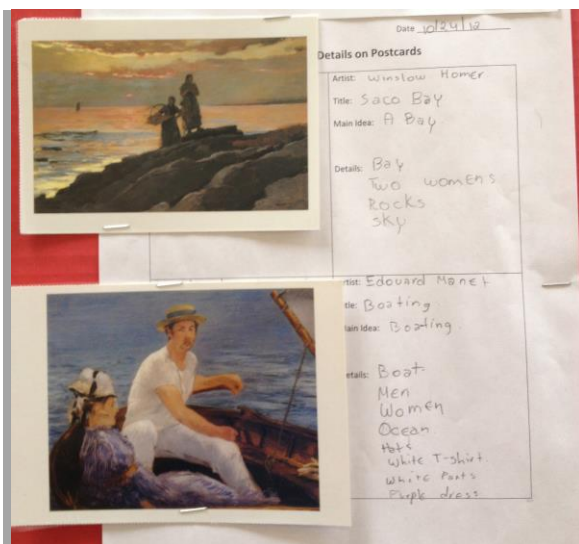
ELD 2: English language learners communicate information, ideas, and concepts necessary for academic success in the content area of Language Arts

CCSS.ELA-Literacy.RL.6.2 Determine a theme or central idea of a text and how it is conveyed through particular details; provide a summary of the text distinct from personal opinions or judgments.

Visual Arts Standards:

1.0: Students will demonstrate ability to perceive, interpret and respond to ideas, experiences and the environment through visual art.

3.0 Students will demonstrate the ability to organize knowledge and ideas for expression in the production of art.



CONNECTED OBJECTIVES

Students identify main ideas and details in famous paintings and analyze elements of art in their own artwork.

MATERIALS & RESOURCES

- Projected image of *Bedroom in Arles* by Vincent Van Gogh
- Postcards/images of paintings for a gallery walk
- Main Ideas in Postcards worksheet
- picture planner
- cardstock

KEY CONTENT VOCABULARY

- Main (central) idea
- Details

KEY ARTS VOCABULARY

- Color
- Shape
- Line

- colored pencils
- Elements of Art Powerpoint.
- Framed paragraph

A S S E S S M E N T

- Main idea and details in Art worksheet
- Artist statement: written description of artwork describing main idea (elements of art) and details (specific examples) in students' drawings.



L E S S O N S T E P S

- Show Van Gogh's painting, *Bedroom in Arles*. Ask students what the whole painting shows. (bedroom). Connect this to idea of the main idea.
- Ask students to identify *details* in the painting (chair, bed, table, etc.) that makes them say that it is a bedroom.
- Have students do a gallery walk to identify main ideas and details in other paintings. Encourage students to use dictionaries to find words they do not know.
- (Next class). Do Artful Thinking Routine "Colors, Shapes, and Lines"
- Explain that Colors, Shapes, and Lines are three elements of art, and the artists use these elements to add *details* to their artwork.
- Teach the Elements of Colors, Shapes, and Lines. Stress that there are 2 types of colors: warm and cool.
- Give students a Picture Planner (below). They will draw a picture featuring a chosen color scheme (warm or cool), with at least 3 shapes, and at least 2 types of lines. Students draw the rough draft on the planner and fill in the blanks at the bottom about the elements.
- Give each student a piece of cardstock and colored pencils to create the final drawing.
- Have each student complete a framed summary paragraph to analyze the elements of art in their drawing.

EXTENSIONS & OPTIONS

- Randomly distribute students' completed summary paragraphs and have students match the paragraphs with the correct artwork.

SOURCES & RESOURCES

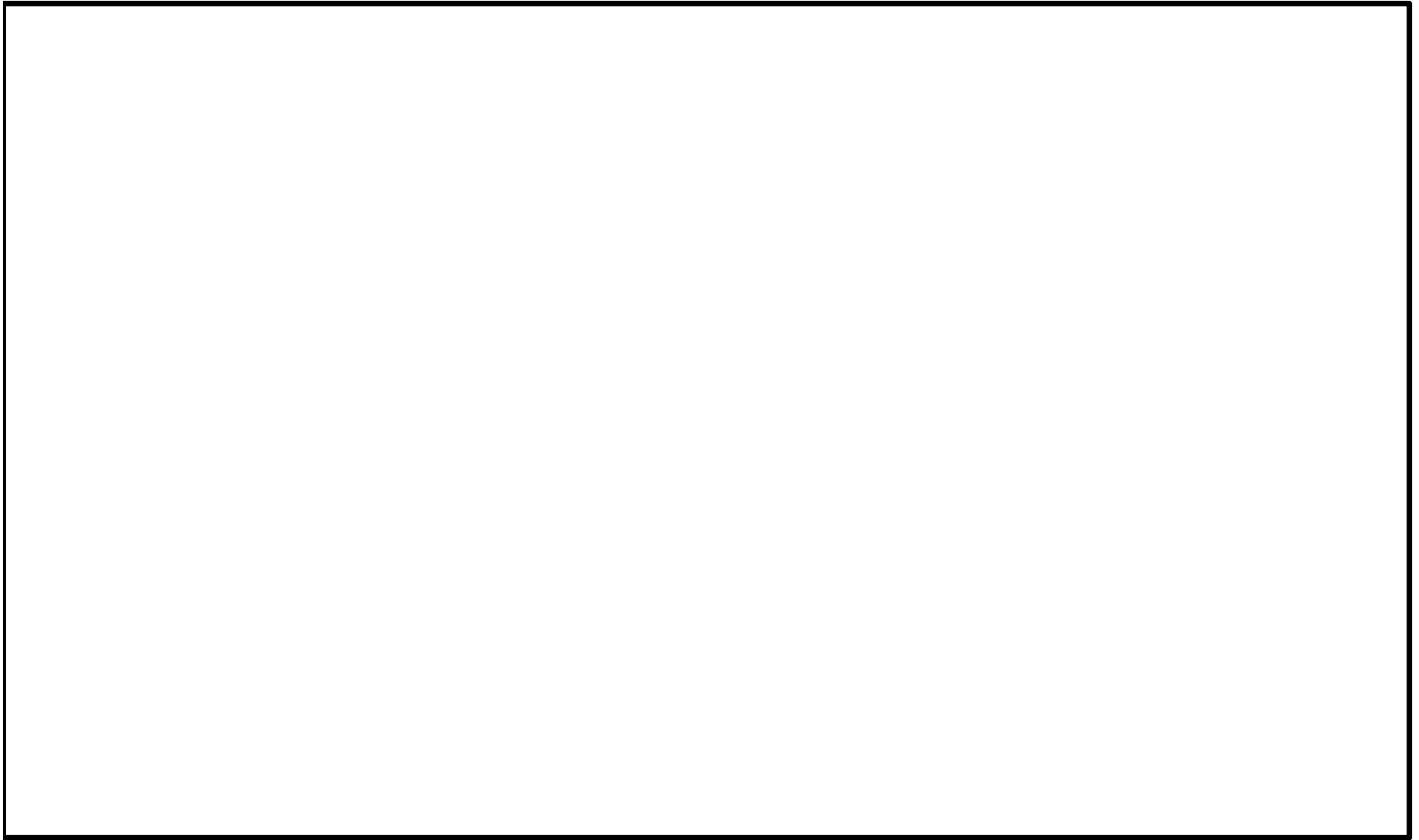
Artful Thinking Routine @

http://www.pzartfulthinking.org/colors_shapes_lines.php

G E T S M A R T T H R O U G H T H E A R T S

AUTHOR: Jennifer Carlson, Bates Middle School, Annapolis MD

Picture Planner



My color scheme is _____ (warm or cool).

I have the following shapes in my picture:

Circle square rectangle oval triangle

I have the following lines in my picture:

Vertical horizontal diagonal zigzag curved

Framed Paragraph

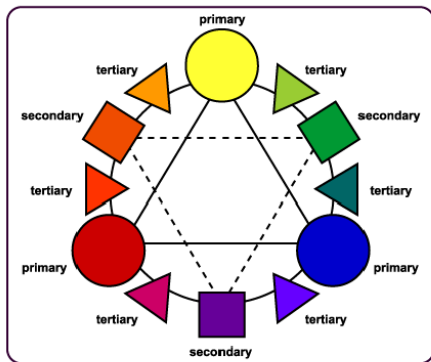
My picture of _____ has several elements of art. First, it has _____ colors like _____, _____, and _____. Next, it has shapes, such as _____, _____, and _____. Finally, you can see _____ and _____ lines in my picture. Colors, shapes and lines make my picture very _____.

Warm Colors	Cool Colors	Shapes	Lines	Adjectives
Red	Blue	Square	Vertical	Interesting
Orange	Green	Circle	Horizontal	Beautiful
Yellow	Purple	Oval	Zig-zag	Exciting
Pink	Black	Rectangle	Curved	Awesome
		Triangle	Diagonal	
		Trapezoid	Thick	
		Parallelogram	Thin	

Main Ideas and Details in Art

Artist:	Artist:
Title:	Title:
Main Idea:	Main Idea:
Details:	Details:
Artist:	Artist:
Title:	Title:
Main Idea:	Main Idea:
Details:	Details:

Color



WARM AND COOLS

TEMPERATURE

Colors have a temperature. Warm colors are red, orange, and yellow. Cool colors are blue, green, and purple. Warm colors advance, while cool colors recede. This is why warm colors are used for advertising and cool colors are used for medical facilities.



Warm Temperature Colors

Colors that tend to come forward or advance. (Yellows, Oranges, & Reds).





M.C. Escher

Jan Vermer



Georgia O' Keeffe





Vincent van Gogh

Patterned Papers



Student Work

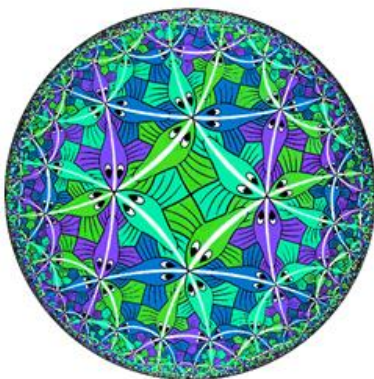
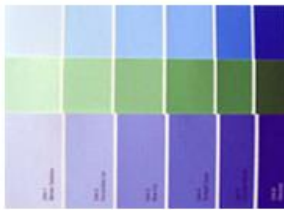




Student Work

Cool Temperature Colors

Colors that tend to recede or move back. (Greens, Blues, & Violets).



M.C. Escher

Pablo Picasso



Georgia O'Keeffe



Marc Chagall